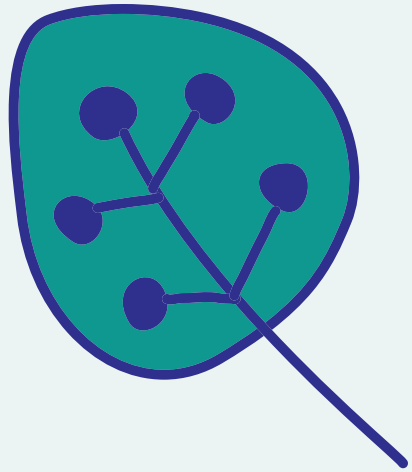
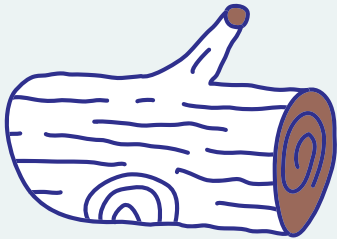


Field Trip Guide



Nature Education Programs



The Wonder of Discovery



2501 Highland Park Drive - Joliet, IL 60432
815-741-7277 jolietpark.org
e-mail: pilcherpark@jolietpark.org

Dear Teachers:

Welcome to the world of Pilcher Park Nature Center - a world of discovery, exploration, science in action, and natural beauty!

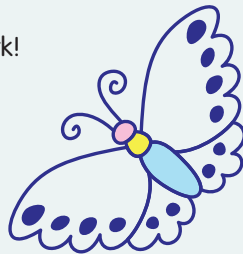
Why should you bring your class to Pilcher Park for a field trip? We understand the pressures of curriculum expectations and fulfilling learning standards . . . those are the reasons a field trip to Pilcher Park is the perfect choice! Let me explain:

- **Curriculum Expectations.** With today's curriculum, you have a lot of information to cover in a school year. We can't think of a better way to bring science alive than by seeing and exploring the world students read about in their textbooks. Plus, after your trip, you can have them do language activities, art, or math problems that refer to your day at Pilcher Park!
- **Fulfilling Learning Standards.** A field trip to Pilcher Park is the ideal way to fulfill numerous learning standards while fostering students' love of learning. Through our hikes and hands-on activities, we use their boundless energy as a learning PLUS! The standards addressed by each field trip are listed in the Field Trip Guide.

We also would like to call attention to some of our longer field trips. Interviews with numerous teachers, like yourself, taught us that by the time the kids are bussed, "field tripped," and bussed back to school, even a one-hour field trip feels like all day. So why not make a day of it? Programs are geared for a full school day of learning and fun. Or, combine two or more of our other exciting programs with a picnic lunch and you have made the most of your trip!

We hope to see you this year out at the park!

Sincerely,
Katie Zaban, Manager



We Promise . . .

- ☞ Our friendly naturalists will greet your group and tell you the plan for the day. We will try to provide the smallest naturalist-to-student ratio possible.
- ☞ Each naturalist will present the same basic information, but each group will find different teachable moments making their experience unique. (Great for discussions back in the classroom.)
- ☞ Your students will have interactive, exploratory and exciting learning experiences. We treat this as an informal classroom, where learning is still the foundation.
- ☞ We will try to meet any special requests or needs you may have to accommodate your class. Feel free to call ahead and talk to one of the naturalists.

Registering for a Program . . .

- **Schedule ahead** - Some months fill very quickly, so get your reservation in early.
- **There is a minimum** of 20 people for all programs. (Maple Syrup minimum is 30 people.)
- **Find the perfect field trip**
- **Note seasonal limitations** - Some programs are not offered in winter, others are only offered in winter . . . so be sure to check!
- **Call and reserve a day!** Call us between 9 am & 3 pm, Monday through Friday at 815-741-7277 with questions about programs and availability. All programs require a \$150 deposit. Note that all Maple Syrup field trips require a 50% deposit to schedule.
- **The Paper Trail** - We will send out confirmation summarizing your trip, and call you one week in advance to confirm the number of attendees.
- **The Big Day** - Please bring your confirmation letter along with any outstanding payment due. Checks should be made payable to Joliet Park District.

Our Mission . . .

is to educate children and adults about the wonders of nature through exploration, discovery, and fun. We hope to help create lifelong lovers of the environment by providing frequent, participant-inspired, exciting access to wild places.

For the BEST Field Trip, we recommend . . .

. . . that you and your students arrive DRESSED FOR THE WEATHER. A comfortable hiker is a happy hiker. Bring rain coats & boots as needed. If it is not thundering or lightning, we will go outside. Wear older shoes (no open toes) and clothes that can get dirty. Long pants are recommended year-round. Winter field trippers: dress for hiking (hats, coats, mittens, boots). . . we WILL go outside.

. . . that groups will be divided up into 25 students for most programs. We feel this ensures a great experience.

. . . that teachers and chaperones express enthusiasm while on the field trip. It's contagious! Teachers/chaperones who are engaged and excited inspire the same in their students.

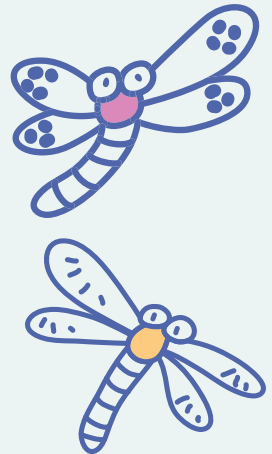
. . . there will be no charge for chaperones, up to one for every 10 students. Any more than this will have to pay a class fee. (There is a fee for chaperones for the Maple Syrup Breakfast and Follow the Drinking Gourd field trips.)

. . . that cell phones are turned off.

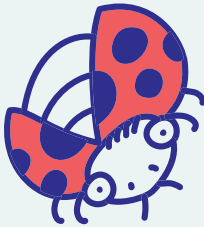
Have a REALLY BIG group? Fear Not!

Choose at least two field trips and we can rotate your "super-sized" group between the different field trips. We want to see you this year and will try to accommodate your group size when possible.

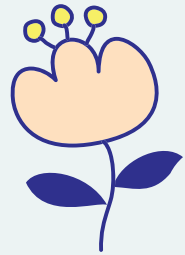
Field trip group maximums are listed and adhered to because we also know the best environmental field trip is the one where all of the students in the group can interact easily with their naturalist. Also, some field trip group sizes are limited due to equipment or space constraints. Call with questions!



Make the MOST of



Your Trip by being **PREPARED!**



Weather . . . We want your students to have a positive learning experience at Pilcher Park. Weather fluctuations are not a problem if students wear proper attire. All programs can accommodate any type of weather. Cancellations with the return of your deposit are allowed only in the case of emergency closings of facilities.

Gift Shop . . . The Nature Center has a gift shop, with the proceeds benefitting the facility. Many fun items are available for under \$1.

Lunch . . . You are more than welcome to bring your own sack lunch and enjoy the sounds of nature while eating your feast. Pilcher Park offers picnic areas in many settings of our woods. Sit in a playground, along the creek, and even in the Nature Center's backyard. This is great for both a one-hour trip or an all-day trip.

In the event of bad weather, indoor lunching space may be available for an additional charge of \$1 per person. Be sure to let us know if your group will be staying for lunch to avoid conflicts with other scheduled programs using the Community Room or Classroom.

If Your Group is Late . . . As a consideration to other registered groups, if you arrive late for your program, the program will still end at the time scheduled according to your reservation.

Table of Contents

Field Trip	Grade Level	We Visit Your School	You Visit the Nature Center	Duration of Field Trip	Pg.
Predator/Prey	2nd Grade and up	\$7 per participant	\$7 per participant	1 hour	7
Mammal Mania	1st Grade and up	\$7 per participant	\$7 per participant	1 hour	7
Nocturnal Animals	All Ages	\$7 per participant	\$7 per participant	1 hour	7
Web of Life	3rd Grade and up	\$7 per participant	\$7 per participant	1 hour	8
Maple Syrup	All Ages	NA	\$9 per participant \$7 per chaperone	2 hours	8
Native Americans	All Ages	\$7 per participant	\$6 per participant	1 hour	8
Nature Center Field Trip	All Ages	NA	\$6 per participant	1 hour	9
Reptile and Amphibian Mania	2nd Grade and up	\$7 per participant	\$6 per participant	1 hour	9
Animal Adventures	Preschool to 2nd Grade	\$7 per participant	\$7 per participant	1 hour	9
Earth Day	All Ages	NA	\$7 per participant	2 hours	10
Squirmin' Worms	2nd Grade and up	\$7 per participant	\$6 per participant	1 hour	10
Leaf Out	Preschool to 4th Grade 4th Grade and up	NA	\$6 per participant \$7 per participant	1 hour 2 hours	10
Skins, Skulls and Scat	1st Grade to 4th Grade	\$8 per participant	\$7 per participant	1.5 hours	11
Pond Critters	3rd Grade and up	NA	\$7 per participant	2 hours	11
Woodland Adventure	4th Grade to 8th Grade	NA	\$7 per participant \$8 per participant \$9 per participant	2 hours 3 hours 4 hours	11
Follow the Drinking Gourd	3rd Grade and up	NA	\$7 per participant \$8 per participant \$9 per participant	2 hours 2.5 hours 3 hours	12
Tales of the Underground Railroad	All Ages	\$7 per participant; \$3 per participant over 100	NA	1 hour	12
Survival Day	5th Grade and up	NA	\$10 per participant	4 hours	13
Teams Quest	5th Grade and up	NA	\$10 per participant	2 hours	13
Meeting the Animals	Preschool to 3rd Grade	\$7 per participant	NA	1 hour	13

Naturalist Visit to Your Classroom!

Schedule a Naturalist to visit your classroom. We offer a handful of programs that can be taught in your classroom or ours. Descriptions of field trips are located in the guide.

- Reptiles and Amphibians • Native Americans • Animal Adventure
 - Squirmin' Worms • Skins, Skulls & Scat • Mammal Mania
 - Tales of the Underground Railroad • Nocturnal Animals
- Predator Prey • Web of Life • Meet the Animal Ambassadors

PREDATOR/PREY

Availability: All Year

Duration: 1 Hour at school
1.5 Hours at NC

Ages: 2nd grade and up

Max Group: 100 people

Fee: \$7 per person at the Nature Center and \$7 per person at school

This is an excellent opportunity for students to learn about the relationship between the hunter and the hunted. A naturalist will help your group understand the importance of this aspect of nature through scientific concepts like the differences between a carnivore, omnivore, and herbivore, or producers, consumers, and decomposers and how this balance fits within certain ecosystems. The main focus will be on wildlife that lives in Illinois and, particularly, the animals in Pilcher Park. Come join us for an exciting and informational field trip that will tie in with your curriculum through the use of interactive activities and a hike.

MAMMAL MANIA

Availability: All Year

Duration: 1 Hour at school
1.5 Hours at NC

Ages: 1st grade and up

Max Group: 100 people

Fee: \$7 per person at the Nature Center and \$7 per person at school

What makes a mammal a mammal? Your class will learn the distinguishing characteristics of mammals from around the world while focusing on those from around the area. The students will learn about mammal characteristics through hands-on activities, interesting facts from our naturalists, and exploration of the habitats of mammals that live in the woods of Pilcher Park.

NOCTURNAL ANIMALS

Availability: All Year

Duration: 1 Hour at school
1.5 Hours at NC

Ages: ALL

Max Group: 100 people

Fee: \$7 per person at the Nature Center and \$7 per person at school

Who knew there is a whole other world of animals out at nighttime while we are fast asleep? This program focuses on more than just the wonderful world of bats. It will allow students to learn about the special characteristics of nocturnal animals that enable them to be active at night. The group will explore information about these nighttime adventurers through activities, conversations with a naturalist, and an exploratory hike through the woods of Pilcher Park.

WEB OF LIFE

Availability: All Year

Duration: 1 Hour at school
1.5 Hours at NC

Ages: 3rd grade and up

Max Group: 100 people

Fee: \$7 per person at the Nature Center and \$7 per person at school

This hands-on field trip allows students to learn about producers, consumers, and decomposers through interactive activities. For example, they may make a food web out of rope and pictures of animals and plants that are native to Illinois. Remove a top predator or producer and see what happens. They may also build their own food web in small groups to help them understand the flow of nutrients and the delicate balance between species in a certain habitat.

MAPLE SYRUP

Availability: February and March ONLY

Duration: 2 hours

Ages: All

Max Group: 100 total

Fee: \$9 per person/
\$7 per chaperone

(including chaperones)
30 person minimum -
half of the total is required
as a deposit.

Your group will see how maple syrup goes from tree to table.

Demonstrations will include the collection of sap and the boiling process in our wood-burning evaporator. Also, visit with some of the Nature Center animals and hike in the woods. The highlight is eating all the pancakes you can along with sausage, a beverage, and maple syrup!

NATIVE AMERICANS

Availability: All Year

Duration: 1 hour

Ages: All

Max Group: 35 people

Fee: \$6 per person at the Nature Center and \$7 per person at school

Students will learn what life was like for the Native Americans who lived in our area 200 to 300 years ago. How did these native people survive here in Illinois? What did they live in? Where did they get food? Children will be able to touch furs and other everyday objects common to the tribes of our area, and will get to learn and participate in Native American games and activities.

NATURE CENTER FIELD TRIP

Availability: All Year

Ages: All

Fee: \$6 per person

Duration: 1 hour

Max Group: 100 people

This is our most popular trip. It includes a close-up visit with some of our animals and a hike in Pilcher Park. Your group will meet a variety of animals eye-to-eye and discuss other exhibits inside the Nature Center for a half hour. Your personal naturalist will also take you on a half-hour guided tour through the woods in search of seasonal wonders.

REPTILE AND AMPHIBIAN MANIA

Availability: All Year

Ages: 2nd grade and up

Fee: \$6 per person at the Nature Center and \$7 per person at school

Duration: 1 hour

Max Group: 35 people

What is it that makes a reptile a reptile or an amphibian an amphibian? Your class will learn the distinguishing characteristics of the reptiles and amphibians of the world while concentrating on those found in our area. This class is a great introduction to herpetology. Live examples of the animals will be used during the class so that the children get to meet some of them "close-up and personal."

ANIMAL ADVENTURES

Availability: All Year

Ages: Preschool to 2nd Grade

Fee: \$7 per person at the Nature Center and \$7 per person at school

Duration: 1 Hour at school
1.5 Hours at NC

Max Group: 100 people

Choose From: Snake, Turtle, Frog, Hawk.

Pick one animal we have at the Nature Center to learn about and then spend 1.5 hours with a naturalist. First, we present a story about the animal you choose. These whimsical stories often give animals qualities they don't always have in the real world. Next, we bring out that special animal to talk about and touch. Our naturalist shares many interesting facts about the animal and discusses how it is different from the one in the stories. We practice the animal's body movement. Then the group makes an individual craft that each child can take home. We end this animal adventure with a mini-hike.

EARTH DAY

Availability: April and May

Ages: All

Fee: \$7 per person

Duration: 2 hours

Max Group: 100 people

Everyday is Earth Day at Pilcher Park. In the spring, we are really GREEN. Foster a love of nature and science in your students with our interactive hike. Learn all about our delicate spring wildflowers and do some hands-on stewardship work. Stewardship could include picking up garbage and removing invasive plants growing along a trail.

SQUIRMIN' WORMS

Availability: All Year

Ages: 2nd Grade and up

Fee: \$6 per person at the Nature Center and \$7 per person at school

Duration: 1 hour

Max Group: 35 people

Bring your students to meet and greet Pilcher Park's famous worms... Squirmin' Herman and Wally the Red Wiggler. Students are introduced to the world of worms by observing characteristics, touching worms, and participating in experiments to explore their body features. Discover how worms interact, eat, and live.

LEAF OUT!

Availability: All Year

Ages: Preschool to 4th Grade (1 hour)
4th Grade & up (2 hours)

Fee: \$6 per person (1 hour)/\$7 per person (2 hours)

Duration: 1 or 2 hours

Max Group: 100 people

Students will practice leaf identification along with observation of shapes, colors, and textures. Leaf rubbings illustrate variation between leaves. Students will investigate the role leaves play in making food. Enjoy a hike on the trails to identify trees of Pilcher Park as students explore the woods. In the extended field trip, students will discuss the importance of leaves and photosynthesis; learn how to identify trees from their bark, seeds, buds, and flowers; discuss why leaves change colors in the fall; and learn how to estimate the height of a tree.

SKINS, SKULLS, & SCAT

Availability: All Year

Ages: 1st to 4th Grade

Fee: \$7 per person at the Nature Center and \$8 per person at school
Students will learn to identify animals from this region and the western United States from their skins, skulls, and scat. Discover the texture of different furs, horns, and antlers. Learn what animals leave behind and the differences in animal scat. Discover differences in furs, horns, and antlers. Students will use new skills in identification to follow an animal trail on an outdoor hike.

Duration: 2 hours

Max Group: 50 people

POND CRITTERS

Availability: April through September

Ages: 3rd Grade and up

Fee: \$7 per person

This interactive field trip allows students to explore more than just fish, turtles, and frogs. Students will investigate deeper into the ponds and visit some of the smaller pond creatures. Students will have fun dipping nets and exploring the waterways. They will learn about invertebrates and metamorphosis while learning how important all the muck and mud are to the earth and ourselves. Learn how to determine the health of a pond. Kids will get dirty!

Duration: 2 hours

Max Group: 100 people

WOODLAND ADVENTURE

Availability: All Year

Ages: 4th Grade & up

Fee: \$7 per person (2 hours); \$8 (3 hours); \$9 (4 hours)

Looking for a field trip that will provide a “hands-on” outdoor experience of basic science concepts? Hike with us and have a woodland adventure.

We can cover things such as ecosystems, habitats, trees, land formations, fossils and more. Let us know specific science topics you are interested in.

We never know which natural wonders we will encounter on a given day.

At the conclusion of the trip, we will play a game to help us remember what we learned.

Duration: 2/3/4 hours

Max Group: 100 people

FOLLOW THE DRINKING GOURD

Availability: Mid-October thru January **Duration:** 2/2.5/3 hours

Ages: 3rd grade and up

Min Group: 50 people

Max Group: 75 people (2 hours);
100 people (2.5 hours);
125 people (3 hours)

Fee: \$7 per person (2 hours); \$8 (2.5 hours); \$9 (3 hours)

Passengers on the Underground Railroad struggled with hunger, cold, and unfamiliar surroundings, never knowing who to trust, and the overwhelming fear of getting caught. With hands-on activities, this program offers a glimpse into what fugitive slaves endured on their trip to freedom. Your group will become passengers on the Underground Railroad. A "conductor" will guide the passengers through the woods to the nearest station (dress warmly). We cross the Mason-Dixon line and look for signs that alert us to danger. Passengers learn the importance of quilts, why spirituals were sung, and other secret codes. By the time the passengers cross into Canada, they will have a better understanding of how those first Underground Railroad passengers felt. No electronic equipment, please.

TALES OF THE UNDERGROUND RAILROAD

Availability: Mid-October thru January **Duration:** 1 hour

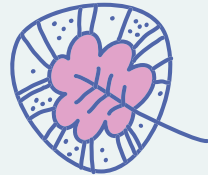
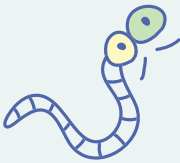
Ages: All

Min Group: 20 people

Fee: \$7 per person first 100/\$3 per person over 100

Location: Your facility

Students will learn the history of the Underground Railroad through a dramatic presentation. Our costumed "conductors" will engage your students with stories about what it meant to be a slave, and the hardships and dangers they faced as passengers.



SURVIVAL DAY

Availability: April through October

Ages: 5th Grade and up

Fee: \$10 per person

Duration: 4 hours

(Call to discuss time.)

Max Group: 100 people

Would your students survive being stranded in the wilderness? Learn the four basic categories for survival; basic first aid, building a shelter, making a fire, finding & purifying water. In the afternoon, you will use what you learned in order to complete THE FINAL CHALLENGE! Have your students bring a sack lunch. They may get to eat in the woods.

TEAMS QUEST

Availability: April thru October

Age: 5th grade & up

Fee: \$10 per person

Duration: 2 hours

Max Group: 100 people

Work through a series of challenges and activities with students to encourage teamwork, communication, and problem-solving skills. Great for school groups, youth groups, sports teams, clubs, and adults. In the invigorating scenic woods of Pilcher Park, utilize leadership skills, ID individual strengths, reduce group tension, promote group unity, build morale, strengthen communication skills, overcome fears, and break down communication barriers.

MEET THE ANIMAL AMBASSADORS

Availability: All Year

Age: Preschool to 4th Grade

Fee: \$6 per person at the Nature Center and \$7 per person at school

Duration: 1 hour

Max Group: 100 people

If you are looking for an introduction to some of the nature center animals, this is the program. Your class will learn some interesting facts about them, see how they move, and get to touch them. Discussion of each type of animal takes 30 minutes. Choose a minimum of 2 animals from the list below. If your group is larger than the minimum, please discuss specific animal options when you book.

Turtle, snake, salamander (no touching), toad, hawk (no touching).

Add \$0.50 per person per half hour beyond 1 hour.



FIELD TRIP / GRADE	ANIMAL ADVENTURE		EARTH DAY		FOLLOW THE DRINKING GOURD		LEAF OUT		MAMMAL MANIA	
	NGSS	CCSS	NGSS	CCSS	NGSS	CCSS	NGSS	CCSS	NGSS	CCSS
KINDERGARTEN	K-LS1-1 K-ESS2-2 K-ESS3-1	W.K.7 K.MD.A.2 R.I.K.1 W.K.1 W.K.2 S.L.K.5 MP.2 M.P.4 K.CC	K-LS1-1 K-ESS2-2 K-ESS3-3	W.K.7 K.MD.A.2 R.I.K.1 W.K.1 W.K.2 S.L.K.5 M.P.2 M.P.4 K.CC	NA	NA	K-LS1-1 K-ESS2-2 K-ESS3-1	W.K.7 K.MD.A.2 R.I.K.1 W.K.1 W.K.2 S.L.K.5 M.P.2 M.P.4 K.CC	K-LS1-1 K-ESS2-2 K-ESS3-1	W.K.7 K.MD.A.2 R.I.K.1 W.K.1 W.K.2 S.L.K.5 M.P.2 M.P.4 K.CC
1ST GRADE	1-LS1-1 1-LS3-1	RI.1.1 W.1.7 W.1.8 MP.2 MP.5 1.MD.A.1			NA	NA	1-LS1-1 1-LS3-1	RI.1.1 W.1.7 W.1.8 M.P.2 M.P.5 1.MD.A.1	1-LS1-1 1-LS3-1	RI.1.1 W.1.7 W.1.8 M.P.2 M.P.5 1.MD.A.1
2ND GRADE	2-LS4-1	W.2.7 W.2.8 M.P.2 M.P.4 2.MD.D.10	2-LS2-1 2-LS2-2 2-LS4-1	W.2.7 W.2.8 M.P.2 M.P.4 M.P.5 S.L.2.5 2.MD.D.10	NA	NA	2-LS2-1 2-LS2-2	W.2.7 W.2.8 M.P.2 M.P.4 M.P.5 S.L.2.5 2.MD.D.10	2-LS4-1	W.2.7 W.2.8 M.P.2 M.P.4 2.MD.D.10
3RD GRADE	NA	NA	3-LS4-3 3-LS4-4	RI.3.1 RI.3.2 RI.3.3 W.3.1 W.3.2 S.L.3.4 M.P.2 M.P.4 3.MD.B.3			3-LS3-2	RI.3.1 RI.3.2 RI.3.3 W.3.2 S.L.3.4 M.P.2 M.P.4 3.MD.B.4	3-LS1-1 3- LS2-1 3- LS3-2 3- LS4-2 3- LS4-3 3- LS4-4	RI.3.1 RI.3.2 RI.3.3 RI.3.7 W.3.1 W.3.2 S.L.3.4 S.L.3.5 M.P.2 M.P.4 3.MD.B.3 3.MD.B.4 3.NBT 3.NF
4TH GRADE	NA	NA							4-LS1-1 LS1-2	4.W.4.1 LS.4.5 4.G.A.3
5TH GRADE	NA	NA	5-LS2-1 5-ESS3-1	RI.5.7 S.L.5.6 RI.5.1 RI.6.7 RI.5.9 W.5.8 W.5.9 M.P.2 M.P.4					5-PS3-1 5- LS1-1	RI.5.1 RI.5.7 RI.5.9 W.5.1 M.P.2 M.P.4 M.P.5 5.MD.A.1
MIDDLE SCHOOL	NA	NA	MS-LS2-1 MS-LS2-2 MS-LS2-3 MS-LS2-4 MS-LS2-5 MS-ESS3-3 MS-ESS3-4	SL.8.1 SL.8.4 SL.8.5 RST.6- 8.1 RST.6-8.7 RST.6-8.8 RI.8.9 WHST.6- 8.1 WHST.6- 8.2 WHST.6- 8.7 WHST.6- 8.8 WHST.6- 8.9 6.EE.B.6 6.EE.C.9 6.RPA.1 6.RPA.3 6.SP.B.5 7.EE.B.4 7.RPA.2 M.P.4			MS-LS1-4	RST.6-8.1 RI.6.8 WHST.6-8.1 6.SPA.2 6.SPB.4	MS-LS1-4 MS-LS2-1 MS-LS2-2 MS-LS2-3 MS- LS2-4 MS- LS4-4 MS- LS4-6	SL.8.1 SL.8.4 SL.8.5 RST.6- 8.1 RST.6-8.7 RST.6-8.8 RI.6.8 RI.8.8 WHST.6-8.1 WHST.6-8.2 WHST.6-8.9 6.EE.C.9 6.RPA.1 6.SPA.2 6.SPB.4 6.SPB.5 7.RPA.2
HIGH SCHOOL	NA	NA	HS-LS2-1 HS-LS2-2 HS-LS2-6 HS-LS2-7 HS ESS3-4	RST.11-12.1 RST.11-12.8 M.P.2 HSN- Q.A.1 HSN- Q.A.2 HSN- Q.A.3			HS-LS1-5 HS-LS2-3	RST.11-12.1 SL.11-12.5 WHST.9-12.2 WHST.9-12.5	HS-LS2-2	RST.11-12.1 WHST.9-12.2 M.P.2 HSN-Q.A.1 HSN-Q.A.2 HSN-Q.A.3

Key:

Blank space= No NGSS or CCSS align with this field trip
N/A= We do not offer this field trip for certain grade levels
RI= Reading for Information
RL= Reading for Literature

RF= Reading Foundations
RH= Reading for History/Social Studies
RST= Reading for Science and Technical Subjects
W= Writing

FIELD TRIP / GRADE	MAPLE SYRUP		MEET ANIMAL AMBASSADORS		NATIVE AMERICANS		NATURE CENTER TOUR		NOCTURNAL ANIMALS	
	NGSS	CCSS	NGSS	CCSS	NGSS	CCSS	NGSS	CCSS	NGSS	CCSS
KINDERGARTEN			K-LS1-1 K-ESS2-2 K-ESS3-1	W.K.7 K.MD.A.2 RI.K.1 W.K.1 W.K.2 SL.K.5 MP2 MP4 K.CC			K-LS1-1 K-ESS2-2 K-ESS3-1	W.K.7 K.MD.A.2 RI.K.1 W.K.1 W.K.2 SL.K.5 MP2 MP4 K.CC	K-LS1-1 K-ESS2-2 K-ESS3-1	W.K.7 K.MD.A.2 RI.K.1 W.K.1 W.K.2 SL.K.5 MP4 K.CC
1ST GRADE			1-LS1-1 1-LS3-1	RI.1.1 W.1.7 W.1.8 MP2 MP5 1.MD.A.1			1-LS1-1 1-LS3-1	RI.1.1 W.1.7 W.1.8 MP2 MP5 1.MD.A.1	1-LS1-1 1-LS3-1	RI.1.1 W.1.7 W.1.8 MP2 MP5 1.MD.A.1
2ND GRADE			2-LS4-1	W.2.7 W.2.8 MP2 MP4 MP5 2.MD.D.10			2-LS2-1 2-LS2-2 2-LS4-1	W.2.7 W.2.8 MP2 MP4 MP5 SL.2.5 2.MD.D.10	2-LS4-1	W.2.7 MP2 MP4 2.MD.D.10
3RD GRADE			3-LS1-1 3 LS3-1 3 LS3-2 3 LS4-2 3 LS4-3 3 LS4-4	RI.3.1 RI.3.2 RI.3.3 RI.3.7 W.3.1 W.3.2 SL.3.4 SL.3.5 MP2 MP4 3.MD.B.3 3.MD.B.4 3.NBT 3.NF			3-LS1-1 3 LS3-2 3 LS4-2 3 LS4-3 3 LS4-4	RI.3.1 RI.3.2 RI.3.3 RI.3.7 W.3.1 W.3.2 SL.3.4 SL.3.5 MP2 MP4 3.MD.B.3 3.MD.B.4 3.NBT 3.NF	3-LS1-1 3 LS2-1 3 LS3-1 3 LS4-2 3 LS4-3 3 MP4 LS4-4	RI.3.1 RI.3.2 RI.3.3 RI.3.7 W.3.1 W.3.2 SL.3.4 SL.3.5 MP4 3.MD.B.3 3.MD.B.4 3.NBT 3.NF
4TH GRADE			4-LS1-1 LS1-2 4	W.4.1 SL.4.5 4.G.A.3			4-LS1-1 4-LS1-2	W.4.1 SL.4.5 4.G.A.3	4-LS1-1 LS1-2 4	W.4.1 SL.4.5 4.G.A.3
5TH GRADE			NA	NA			5-PS3-1 5-LS1-1 5-LS2-1	RI.5.1 RI.5.7 RI.5.9 SL.5.5 W.5.1 MP2 MP4 MP5 5.MD.A.1	5-PS3-1 5-LS1-1	RI.5.1 RI.5.7 RI.5.9 SL.5.5 W.5.1 MP4 MP5 5.MD.A.1
MIDDLE SCHOOL	MS-LS1-6	RST6-8.1 RST6-8.2 WHST6-8.2 WHST6-8.9 6.EE.C.9	NA	NA			MS-LS1-4 MS-LS1-6 MS-LS2-1 MS-LS2-3 MS-LS2-4 MS-LS4-4	SL.8.1 SL.8.4 SL.8.5 RST6-8.1 RST6-8.2 RST6-8.7 RST6-8.9 RI.6.8 RI.6.8 RI.8.8 WHST6-8.1 WHST6-8.2 WHST6-8.9 6.EE.C.9 6.RPA.1 6.SPA.2 6.SP.B.4 6.SP.B.5 7.RPA.2	MS-LS1-4 MS-LS2-1 MS-LS2-3 MS-LS2-4 MS-LS4-4	SL.8.1 SL.8.4 SL.8.5 RST6-8.1 RST6-8.2 RST6-8.7 RST6-8.9 RI.8.8 WHST6-8.1 WHST6-8.2 WHST6-8.9 6.EE.C.9 6.RPA.1 6.SPA.2 6.SP.B.4 6.SP.B.5 7.RPA.2
HIGH SCHOOL	HS-LS1-5 HS-LS2-3	RST.11-12.1 SL.11-12.5 WHST9-12.2 WHST9-12.5	NA	NA					HS-LS2-1 HS-LS2-2	RST.11-12.1 WHST9-12.2 MP2 MP4 HSN-Q.A.1 HSN-Q.A.2 HSN-Q.A.3

WHST= Writing for History/Social Studies, Science and Technical Subjects
SL= Speaking and Listening
L= Language

PS= Physical Science
LS= Life Sciences
ESS= Earth and Space Sciences
ETS= Engineering, Technology, and Applications of Science

FIELD TRIP / GRADE	PREDATOR/PREY		POND CRITTERS		REPTILE / AMPHIBIAN MANIA		SKINS, SKULLS, SCAT		SQUIRMIN' WORMS	
	NGSS	CCSS	NGSS	CCSS	NGSS	CCSS	NGSS	CCSS	NGSS	CCSS
KINDERGARTEN	NA	NA	NA	NA	NA	NA	NA	NA	NA	NA
1ST GRADE	NA	NA	NA	NA	NA	NA	1-LS1-1 1-LS3-1	RI.1.1 W.1.7 W.1.8 MP2 MP5 1.MD.A.1	NA	NA
2ND GRADE	2-LS4-1	W.2.7 W.2.8 MP2 MP4 2.MD.D.10	NA	NA	2-LS4-1	W.2.7 W.2.8 MP2 MP4 2.MD.D.10	2-LS4-1	W.2.7 W.2.8 MP2 MP4 2.MD.D.10	NA	NA
3RD GRADE	3-LS1-1 3-LS2-1 3-LS3-1 3-LS3-2 3-LS4-2 3-LS4-3 3-LS4-4	RI.3.1 RI.3.2 RI.3.3 RI.3.7 W.3.1 SL.3.4 SL.3.5 MP2 MP4 3.MD.B.3 3.MD.B.4 3.NBT 3.NF	3-LS1-1 3-LS3-1 3 LS3-2 3 LS4-2 3 LS4-3 3 LS4-4	RI.3.1 RI.3.2 RI.3.3 W.3.1 W.3.2 SL.3.4 MP2 MP4 3.MD.B.3 3.MD.B.4 3.NBT 3.NF	3-LS1-1 3-LS2-1 3-LS3-1 3-LS3-2 3-LS4-2 3-LS4-3 3-LS4-4	RI.3.1 RI.3.2 W.3.1 W.3.2 MP2 MP4 3.MD.B.3 3.MD.B.4 3.NBT 3.NF	3-LS1-1 W.3.2 MP2 MP4 3-LS4-2 3-LS4-3 3-LS4-4	RI.3.1 RI.3.2 RI.3.3 W.3.1 W.3.2 SL.3.4 MP2 MP4 3.MD.B.3 3.MD.B.4 3.NBT 3.NF	3-LS4-2	RI.3.1 RI.3.2 RI.3.3 W.3.2 MP4 3.MD.B.3
4TH GRADE	4-LS1-1 4-LS1-2	W.4.1 SL.4.5 4.G.A.3	4-LS1-1 4 LS1-2	W.4.1 SL.4.5 4.G.A.3	4-LS1-1 4-LS1-2	W.4.1 SL.4.5 4.G.A.3	4-LS1-1 4-LS1-2	W.4.1 SL.4.5 4.G.A.3	NA	NA
5TH GRADE	5-PS3-1 5-LS1-1	RI.5.1 RI.5.7 RI.5.9 SL.5.5 W.5.1 MP2 MP4 MP5 5.MD.A.1	5-PS3-1 5 LS1-1	RI.5.1 RI.5.9 SL.5.5 W.5.1 MP2 MP4 MP5 5.MD.A.1	5-PS3-1 5-LS1-1	RI.5.1 RI.5.7 RI.5.9 SL.5.5 W.5.1 MP2 MP4 MP5 5.MD.A.1	NA	NA	NA	NA
MIDDLE SCHOOL	MS-LS1-4 MS-LS2-1 MS-LS2-2 MS-LS2-3 MS-LS2-4 MS-LS4-4 MS-LS4-6	SL.8.1 SL.8.4 SL.8.5 RST.6-8.1 RST.6-8.7 RST.6-8.9 RI.6.8 RI.8.8 WHST.6-8.1 WHST.6-8.2 WHST.6-8.9 6.EE.C.9 6.RPA.1 6.SPA.2 6.SPB.4 6.SPB.5 7.RPA.2 MP4	MS-LS1-4 MS-LS1-5 MS-LS2-1 MS-LS2-2 MS-LS2-3 MS-LS2-4 MS-LS2-5 MS-LS4-4	SL.8.1 SL.8.4 SL.8.5 RST.6-8.1 RST.6-8.2 RST.6-8.7 RST.6-8.8 RST.6-8.9 RI.6.8 RI.8.8 WHST.6-8.1 WHST.6-8.2 WHST.6-8.9 6.EE.C.9 6.RPA.1 6.SPA.2 6.SPB.4 6.SPB.5 7.RPA.2	MS-LS1-4 MS-LS2-1 MS-LS2-2 MS-LS2-3 MS-LS2-4 MS-LS4-4	SL.8.1 SL.8.4 SL.8.5 RST.6-8.1 RST.6-8.2 RST.6-8.7 RST.6-8.8 RST.6-8.9 RI.6.8 RI.8.8 WHST.6-8.1 WHST.6-8.2 WHST.6-8.9 6.EE.C.9 6.RPA.1 6.SPA.2 6.SPB.4 6.SPB.5 7.RPA.2	MS-LS1-4 MS-LS2-1 MS-LS2-3 MS-LS2-4	NA	NA	NA
HIGH SCHOOL	HS-LS2-2 HS-LS2-6	RST.9-10.8 RST.11-12.1 RST.11-12.7 RST.11-12.8 WHST.9-12.2 MP2 MP4 HSN-Q.A.2 HSN-Q.A.3 HSS-IDA.1 HSS-ICA.1 HSS-IC.B.6	HS-LS2-1 HS-LS2-2 HS-LS2-4 HS-LS2-5	RST.11-12.1 WHST.9-12.2 MP2 MP4 HSN-Q.A.1 HSN-Q.A.2 HSN-Q.A.3	NA	NA	NA	NA	NA	NA

Key:

Blank space= No NGSS or CCSS align with this field trip
N/A= We do not offer this field trip for certain grade levels
RI= Reading for Information
RL= Reading for Literature

RF= Reading Foundations
RH= Reading for History/Social Studies
RST= Reading for Science and Technical Subjects
W= Writing

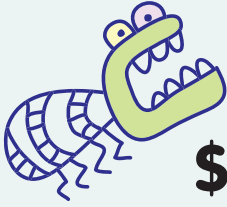
FIELD TRIP / GRADE	SURVIVAL DAY		TALES OF THE UNDERGROUND		TEAMSQUEST		WEB OF LIFE		WOODLAND ADVENTURES	
	NGSS	CCSS	NGSS	CCSS	NGSS	CCSS	NGSS	CCSS	NGSS	CCSS
KINDERGARTEN	NA	NA			NA	NA	NA	NA	NA	NA
1ST GRADE	NA	NA			NA	NA	NA	NA	NA	NA
2ND GRADE	NA	NA			NA	NA	2.LS2-1 2.LS2-2 2.LS4-1	W.2.7 W.2.8 MP.2 MP.4 SL.2.5 2.MD.D.10	NA	NA
3RD GRADE	NA	NA			NA	NA	3.LS1-1 3.LS3-1 3.LS3-2 3.LS4-3 3.LS4-4	RI.3.1 RI.3.2 RI.3.3 W.3.1 W.3.2 SL.3.4 MP.2 3.MD.B.3 3.MD.B.4 3.NBT 3.NF	NA	NA
4TH GRADE	NA	NA			NA	NA	4.LS1-1 4.LS1-2	W.4.1 SL.4.5 4.G.A.3	4.LS1-1 LS1-2	4.W.4.1 SL.4.5 4.G.A.3
5TH GRADE							5.PS3-1 5.LS1-1 5.LS2-1	RI.5.1 RI.5.7 SL.5.5 W.5.1 MP.2 MP.4 MP.5	5.PS3-1 LS1-1 LS2-1	5.RI.5.1 RI.5.7 RI.5.9 SL.5.5 W.5.1 MP.2 MP.4 5.MD.A.1
MIDDLE SCHOOL							MS-LS1-4 MS-LS1-5 MS-LS1-6 MS-LS2-1 MS-LS2-2 MS-LS2-3 MS-LS2-4 MS-LS2-5 MS-LS4-4 MS-ESS3-3 MS-ESS3-4	SL.8.1 SL.8.4 SL.8.5 RST.6-8.1 RST.6-8.2 RST.6-8.7 RST.6-8.7 RST.6-8.8 RST.6-9.9 RI.6.8 RI.8.8 WHST.6-8.1 WHST.6-8.2 WHST.6-8.7 WHST.6-8.8 WHST.6-8.9 6.EE.C.6 6.EE.C.9 6.RPA.1 6.RPA.3 6.SPA.2 6.SPB.4 6.SPB.5 7.EE.B.4 7.RPA.2 MP.4	MS-LS1-4 MS-LS1-5 MS-LS1-6 MS-LS2-1 MS-LS2-1 MS-LS2-2 MS LS2-3 MS- LS2-4 MS- LS2-5 MS- LS4-4 MS- LS4-6	RI.6.8 WHST.6-8.1 WHST.6-8.2 WHST.6-8.7 WHST.6-8.8 WHST.6-8.9 6.EE.C.9 6.RPA.1 6.RPA.3 6.SPA.2 6.SPB.4 6.SPB.5 7.RPA.2 MP.4
HIGH SCHOOL							HS-LS1-5 HS-LS2-1 HS-LS2-2 HS-LS2-3 HS-LS2-4 HS-LS2-5 HS-LS2-6 HS-LS2-7	RST.9-10.8 RST.11-12.1 RST.11-12.7 RST.11-12.8 SL.11-12.5 WHST.9-12.2 WHST.9-12.5 WHST.9-12.7 MP.2 MP.4 HSN-Q.A.1 HSN-Q.A.2 HSN-Q.A.3 HSS-ID.A.1 HSS-IC.A.1 HSS-IC.B.6	HS-LS1-5 HS LS2-1 HS- LS2-2 HS- LS2-6 HS- LS2-7 HS- LS2-4 HS- LS2-5	RST.11-12.1 SL.11-12.5 WHST.9-12.2 WHST.9-12.5 MP.2 MP.4 HSN-Q.A.2 HSN-Q.A.3

WHST= Writing for History/Social Studies, Science and Technical Subjects
SL= Speaking and Listening
L= Language

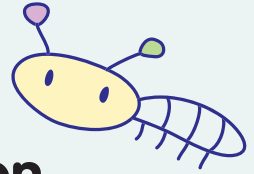
PS= Physical Science
LS= Life Sciences
ESS= Earth and Space Sciences
ETS= Engineering, Technology, and Applications of Science

Spend a Wild Night with the Animals
at Pilcher Park Nature Center's

OVERNIGHT ADVENTURE!



7pm-8am



\$25⁰⁰ per person

Includes:

- In-depth tour of the Nature Center - meet all of our animals and watch some eat!
- Campfire with Marshmallow Roasting
- Pancake Breakfast

May Include the Following as Available:

- Night Hike • Bat Hike (May-Sept. Only)
- Games • Crafts • Badge Activities (You provide badge information 2 weeks prior.)

Plus . . . Watch a
Movie!

PLEASE NOTE: There is a minimum of 20 participants. If your group does not meet the minimum, your group must pay the difference. Chaperones are counted as a participant and must pay.

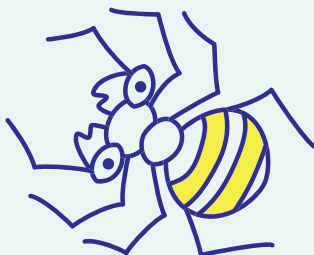
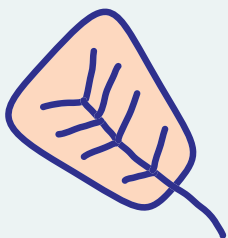
Adopt an Animal

Connect your classroom to the Nature Center by adopting an animal at Pilcher Park Nature Center.

Sign your class up to sponsor one of the Nature Center's many animals or fish tanks. The sponsor money will go toward the feeding and living cost of the animal. Your class will receive:

- Certificate of Adoption
- Photo of your Adopted Animal
- Fun Animal Fact Sheet
- Name, School, and Picture will be hung next to your adopted animal.

Contact the Nature Center if you would like to Adopt an Animal.





3000 W. Jefferson St.
Joliet, IL 60435

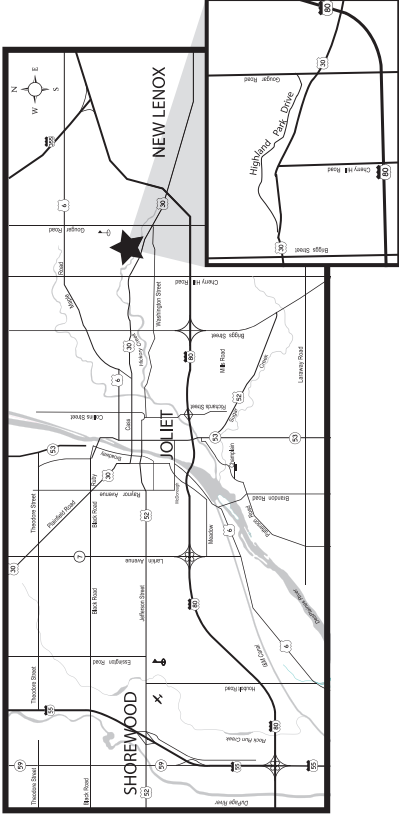


Board of Commissioners

- Sue Gulas, President
- Joe Mutz, Vice President
- Joe Clement, Commissioner
- Matt McGuire, Commissioner
- Bill Tatro, Commissioner

Tom Carstens
Executive Director

Katie Zaban
Nature Center Superintendent



Directions to Nature Center:

- From I-55 take I-80 East to Briggs St. Go north on Briggs to Cass St. East on Cass St. 1/4 mile to park entrance on left. Follow signs to nature center.
- From I-355 take I-80 West to Rt. 30. Go West on Rt. 30/Cass St 2 miles to park entrance on right. Follow signs to nature center.

